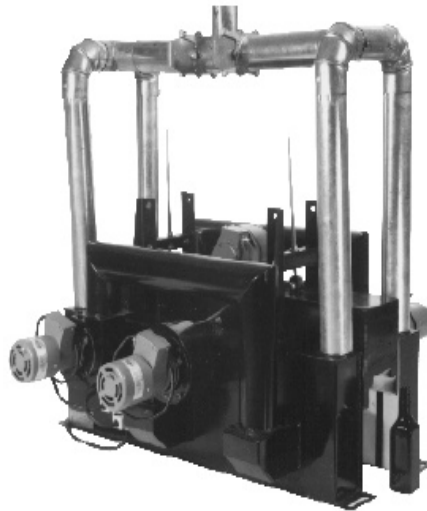




CERTINCOAT® STANDARD HOOD



GENERAL

The Standard Hood is our basic hot-end coating hood for glassware. It can be used on production lines that produce up to 80 tons of ware per day with bottle heights up to 12 inches. A variety of center section widths are available to meet your specific needs.

The Certincoat System

To achieve the maximum benefits of hot-end coating, Arkema Inc. designed a complete coating system. The Certincoat® System consists of four elements:

- Certincoat® TC100 coating material
- Precision metering pump assembly
- High-efficiency coating hood
- Continuous technical support

Several variations of high-efficiency hoods are available. Our **Standard Hood** contains the patented double loop recirculation system. This design provides high coating efficiency and deposits a uniform layer of tin oxide on each glass container.

The statements, technical information and recommendations contained herein are believed to be accurate as of the date hereof. Since the conditions and methods of use of the product and of the information referred to herein are beyond our control, Arkema Inc. expressly disclaims any and all liability as to any results obtained or arising from any use of the product or reliance on such information; NO WARRANTY OF FITNESS FOR ANY PARTICULAR PURPOSE, WARRANTY OF MERCHANTABILITY OR ANY OTHER WARRANTY, EXPRESS OR IMPLIED, IS MADE CONCERNING THE GOODS DESCRIBED OR THE INFORMATION PROVIDED HEREIN. The information provided herein relates only to the specific product designated and may not be applicable when such product is used in combination with other materials or in any process. The user should thoroughly test any application before commercialization. Nothing contained herein constitutes a license to practice under any patent and it should not be construed as an inducement to infringe any patent and the user is advised to take appropriate steps to be sure that any proposed use of the product will not result in patent infringement.

See MSDS for Health & Safety Considerations
© 2004 Arkema Inc. All rights reserved.



Arkema Inc
2000 Market Street
215-419-7000
Philadelphia, PA 19103
www.arkemagroup.com

www.certincoat.com



Here is how it works:

Inner Loop

The inner loop receives and circulates a highly concentrated stream of vaporized TC100 material.

Outer Loop

The outer loop captures any coating material vapor escaping from the inner loop and recirculates it a low concentration.

Exhaust

Coating vapor that escapes the outer loop is captured through exhaust slits located at each corner of the hood.

Finish Protection

The flow of fresh air through the center section of the hood assures excellent finish protection.

The statements, technical information and recommendations contained herein are believed to be accurate as of the date hereof. Since the conditions and methods of use of the product and of the information referred to herein are beyond our control, Arkema Inc. expressly disclaims any and all liability as to any results obtained or arising from any use of the product or reliance on such information; NO WARRANTY OF FITNESS FOR ANY PARTICULAR PURPOSE, WARRANTY OF MERCHANTABILITY OR ANY OTHER WARRANTY, EXPRESS OR IMPLIED, IS MADE CONCERNING THE GOODS DESCRIBED OR THE INFORMATION PROVIDED HEREIN. The information provided herein relates only to the specific product designated and may not be applicable when such product is used in combination with other materials or in any process. The user should thoroughly test any application before commercialization. Nothing contained herein constitutes a license to practice under any patent and it should not be construed as an inducement to infringe any patent and the user is advised to take appropriate steps to be sure that any proposed use of the product will not result in patent infringement.

See MSDS for Health & Safety Considerations
© 2004 Arkema Inc. All rights reserved.



Arkema Inc
2000 Market Street
215-419-7000
Philadelphia, PA 19103
www.arkemagroup.com

www.certincoat.com



Technical Data - Certincoat Standard Hood

*Capabilities: Bottle Types: All Shapes and Sizes

Bottle Heights: Up to 12" (305 mm)

Line Production: Less than 80 tons of ware per day

Electrical Supply for Blowers: 115/230 V, 50/60 Hz, Single Phase

Center Section Widths: 4, 6, 8" (105, 155, 205 mm)

Special Sizes Available Upon Request

Height w/ Exhaust Harness: 41" (1045 mm)

Length: 40" (1020 mm)

Width w/6" (155 mm) Center Section: 38" (965 mm)

Approximate Assembled Weight: 225 lb (105 kg)

*Other factors such as ware mass, ware spacing, and other plant conditions must be taken into consideration when determining the capabilities of the Standard Hood.

BEFORE HANDLING THIS MATERIAL, READ AND UNDERSTAND THE MSDS (MATERIAL SAFETY DATA SHEET) FOR ADDITIONAL INFORMATION ON PERSONAL PROTECTIVE EQUIPMENT AND FOR SAFETY, HEALTH AND ENVIRONMENTAL INFORMATION.

The statements, technical information and recommendations contained herein are believed to be accurate as of the date hereof. Since the conditions and methods of use of the product and of the information referred to herein are beyond our control, Arkema Inc. expressly disclaims any and all liability as to any results obtained or arising from any use of the product or reliance on such information; NO WARRANTY OF FITNESS FOR ANY PARTICULAR PURPOSE, WARRANTY OF MERCHANTABILITY OR ANY OTHER WARRANTY, EXPRESS OR IMPLIED, IS MADE CONCERNING THE GOODS DESCRIBED OR THE INFORMATION PROVIDED HEREIN. The information provided herein relates only to the specific product designated and may not be applicable when such product is used in combination with other materials or in any process. The user should thoroughly test any application before commercialization. Nothing contained herein constitutes a license to practice under any patent and it should not be construed as an inducement to infringe any patent and the user is advised to take appropriate steps to be sure that any proposed use of the product will not result in patent infringement.

See MSDS for Health & Safety Considerations
© 2004 Arkema Inc. All rights reserved.



Arkema Inc
2000 Market Street
215-419-7000
Philadelphia, PA 19103
www.arkemagroup.com

www.certincoat.com